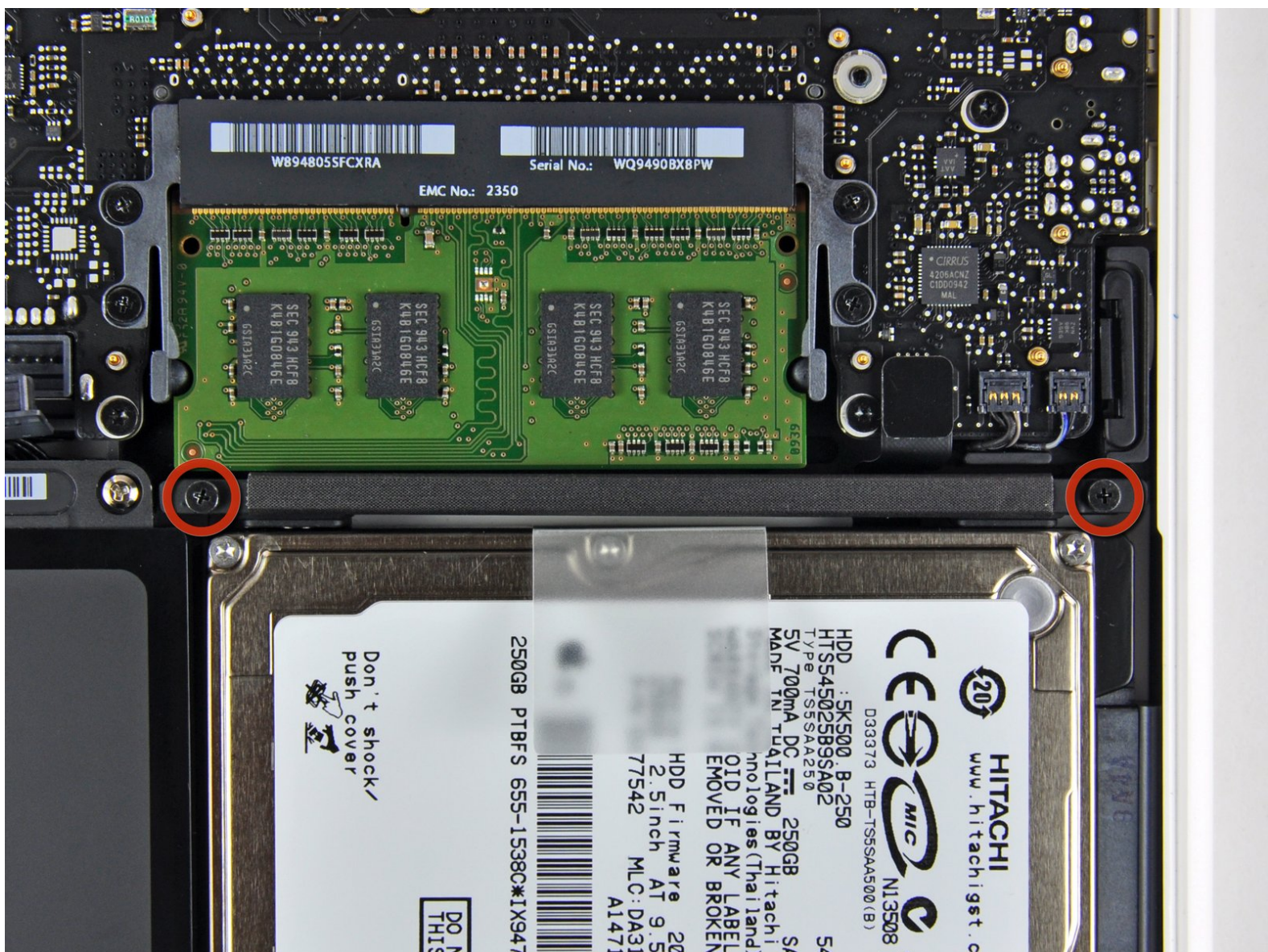




MacBook Unibody Model A1342 Hard Drive Replacement

Written By: Walter Galan



INTRODUCTION

This guide is an internal private guide used as a prereq.



TOOLS:

- [Phillips #00 Screwdriver](#) (1)
-

- ## Step 2



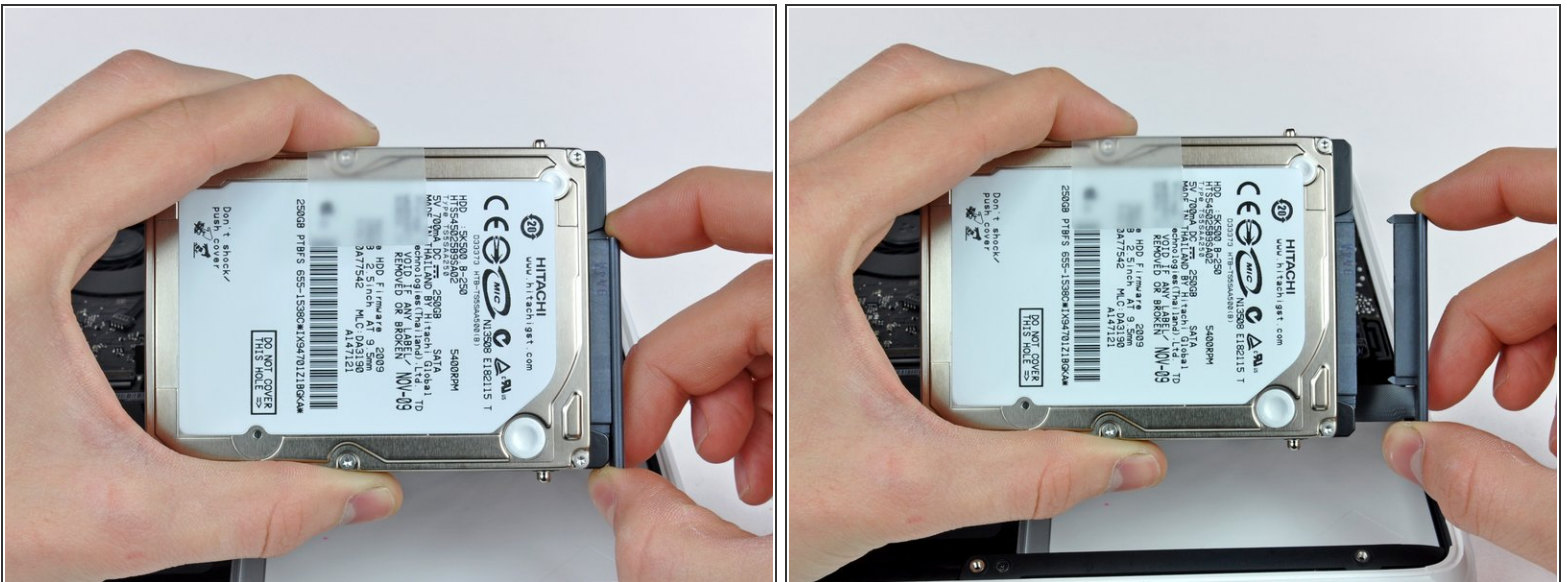
- Lift the retaining bracket out of the upper case.
- When putting the bracket back after replacing the drive, it is easy to put in backwards. If it doesn't seat smoothly, then reverse it and try again.

Step 3



- Lift the hard drive by its pull tab and pull it away from the upper case, minding the cable still attaching it to the logic board.
- ⓘ In some revisions of the MacBook A1342, the hard drive bracket may include two rubber brackets (as highlighted in the second picture.) The correct orientation of the rubber brackets is shown in the third picture.

Step 4



- Remove the hard drive cable by pulling its connector straight away from the hard drive.

To reassemble your device, follow these instructions in reverse order.

This document was generated on 2019-12-14 03:03:15 PM (MST).

